

CONTOUR CAT KS80 BL

Edge processing system

NEW

PREMIUM QUALITY
MADE IN GERMANY



**New BRUSHLESS machine series:
Motor without carbon brushes!**

Brief description:

A handy machine together with a perfectly matched range of tools for professional work on the stone edge. Applications at the edge: milling, grinding, polishing, profiling, groove milling, etc.

Special features:

- Magnetic motor without carbon brushes. The previously necessary, regular carbon replacement is completely eliminated. Therefore: less follow-up costs, less work, fewer sources of error.
- Significantly more torque. This is particularly noticeable in the lower speed range.
- High efficiency (Up to +30%). The omitted frictional resistance of the brushes and other factors result in higher efficiency.
- Long service life. The service life of ordinary brand machines is significantly exceeded.
- Significantly less heat generation of the running machine, even under full load.
- Slim design. Handy, small and light machine for low-fatigue work and with the best center of gravity.
- Machine comes to a quick stop when switched off - by rapid braking of the magnetic motor.
- Good guidance even on narrow contact surfaces.
- In combination with GADIA OSCILLATOR (patent protected), an additional vertical working stroke movement takes place during grinding or polishing for streak-free polishing.
- Water supply from the inside through the rinsing head and from the outside through 2 jointed coolant hoses with nozzles.
- Excellent view of the grinding edge.
- Water-cooled Aluminum end shield.
- Wear-resistant and unbreakable silicone power cable in signal colour (clearly visible).
- Spindle lock for easy tool changes.
- Wide speed range with infinitely variable speed regulation.
- Special requests (e.g. for longer connecting cables or hoses) can be considered.

- Repair service for all of our machines.

Application:

For the processing of natural or artificial stone. Especially suitable for stonemasons, tilers, kitchen builders, etc.

Technical Data:

Voltage:	230 Volt	Spindle thread:	M 14
Power:	1,400 Watt	Weight:	6.7 kg
Speed:	1,600-6,400 rpm	Soft start	
Grinding height max.:	60 mm	Restart cutout	
Height adjustment:	25 mm		

Included:

Base plate with felt on the underside and stepless height adjustment, water supply inside and outside with 2 jointed coolant hoses with nozzle, water control valve, hose 2.5 m with brass quick coupling, silicone connecting cable 4 m, knob handle, personal protection switch PRCD or CEE-plug, wrench size 24/27 mm, case.

Available versions:

CONTOUR CAT KS 80 BL DI 230V (with PRCD)	Item no. 001.000.113
CONTOUR CAT KS 80 BL CEE 230V (for transformer)	Item no. 001.000.114

GADIA OSCILLATOR (patent protected)

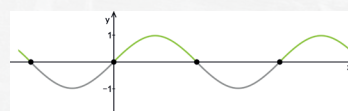
Grinding head with vertical oscillating movement is at the same time tool holder for GADIA CYLI grinding and polishing cylinder (see reverse side). Connection thread M 14

Item no. 000.004

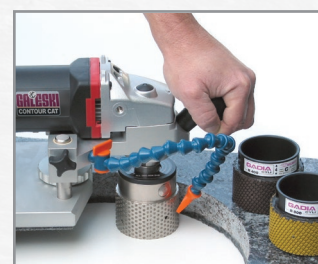
Spacer - Set

2 spacer (1pc. for cutter and 1pc. for grinder and polisher) for edge milling with a template

Item no. 000.578



More tools can be found on the reverse side.



GALESKI -

Manufaktur innovativer Maschinen

Boschstr. 4 • D-56457 Westerburg

Tel.: +49 2663 9437-0 • Fax: +49 2663-9437-37

E-Mail: info@galeski.de • Web: www.galeski.de

CONTOUR CAT KS80 BL

Edge processing system

GADIA CYLI in combination with GADIA OSCILLATOR (see front page).

Grinding and polishing cylinder for grinding height 4 and 6 cm.

Grinding sequence galv. metal bond: G50 / G100

Polishing sequence resin bond: R200 / R400 / R800 / R1500 / R3000 / Polisher

GADIA CYLI grinding height 4 cm complete set (1pc each):

Item no. 000.329

GADIA CYLI grinding height 6 cm complete set (1pc each):

Item no. 000.338



GADIA DISC

Groove Cutter

Make inlet grooves accurately and quickly, even on a curved edge!

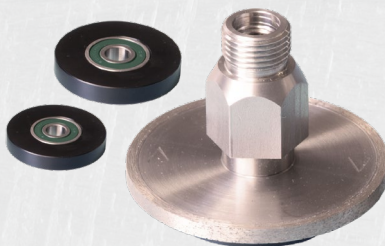
• Cover glue joints by inserting brass or stainless steel inlets in kitchen tops or stairs („2+2" and „3+3").

• Mounting and attaching stone in wood or metal frames, e.g. tables.

GADIA DISC Set:

Ø 80 mm x 5 mm, adapter M14 x M8, screw M8, 2pc spacer for 10 and 15 mm milling depth

Item no. 000.530



GADIA CONNECT

Groove cutter and plastic chips especially for flush to surface connections.

GADIA groove cutter:

Ø 80 mm x 5 mm, adapter M14 x M8, Screw M8, 1pc spacer

Item no. 000.541

GADIA plastic chips, 20pc:

Item no. 000.545

GADIA plastic chips, 50pc:

Item no. 000.546



GADIA EDGE 45°

Chamfer milling cutter, also for edges with small radii.

Make 45° chamfers on the top and bottom of a stone slab without having to turn the work piece.

• For narrow chamfers, 3 spacer sizes make the best use of the complete grinding surface on the tool.

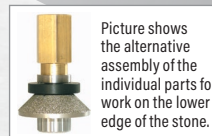
• Central water feeding gives you a good view of the grinding edge and doesn't hinder your work.

• Particularly suitable for chamfers up to a width of 5 mm.

GADIA EDGE 45° Set:

Tool holder with M14 inner, 3pc spacer, Milling cutter coarse (G50), Milling cutter fine (G100).

Item no. 000.047



GADIA TRIM

Work on the bottom edge of stone

• Inaccuracies in slab thickness at the joint are calibrated.

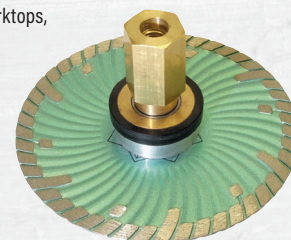
• For clean bottom edges, e.g. for projecting kitchen worktops, visible bottom edge of a step.

• Front cuts to reduce the thickness of the visible edge.

GADIA TRIM Set:

Adapter M14 x M8, spacer, distance ring, 1 fitting screw, 2 supporting rings.

Item no. 000.588



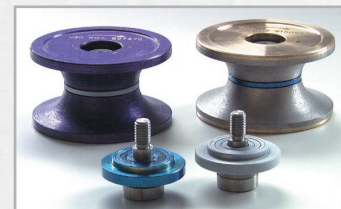
GADIA PROFILE

Profiling

• Sintered diamond grinder with spacer for exact grinding depth.

• Profiling polishing wheels without spacer, suitable for marble and granite.

• Standard or special profiles on request.



GADIA ROUTER

Lower the edge

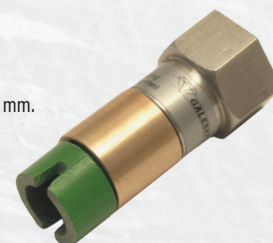
• For inserting hotplates or wash basins.

• Use the GADIA ROUTER to easily make exact slots up to 20 mm.

GADIA ROUTER Set:

Tool holder with space wheel M14 inner x M10 inner, Finger router Ø 20 mm M10 outer connection.

Item no. 000.509



Plastic velcro pad

• Velcro pad to be placed on the felt covering of the base plate. The smooth surface is suitable for use on rough surfaces

Item no. 000.526



GALESKI -

Manufaktur innovativer Maschinen

Boschstr. 4 • D-56457 Westerburg

Tel.: +49 2663 9437-0 • Fax: +49 2663-9437-37

E-Mail: info@galeski.de • Web: www.galeski.de

Subject to technical modifications and error. | Effective: 04/2023

PREMIUM QUALITY
MADE IN GERMANY